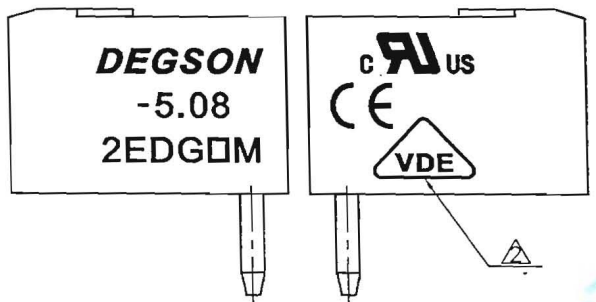
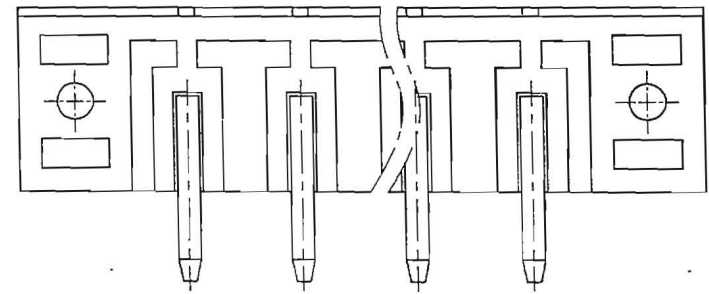
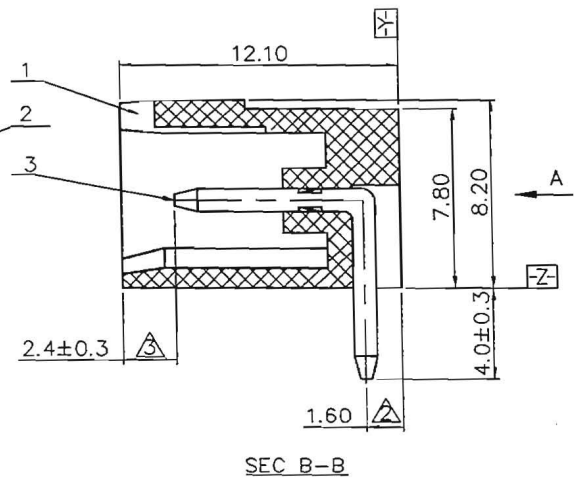
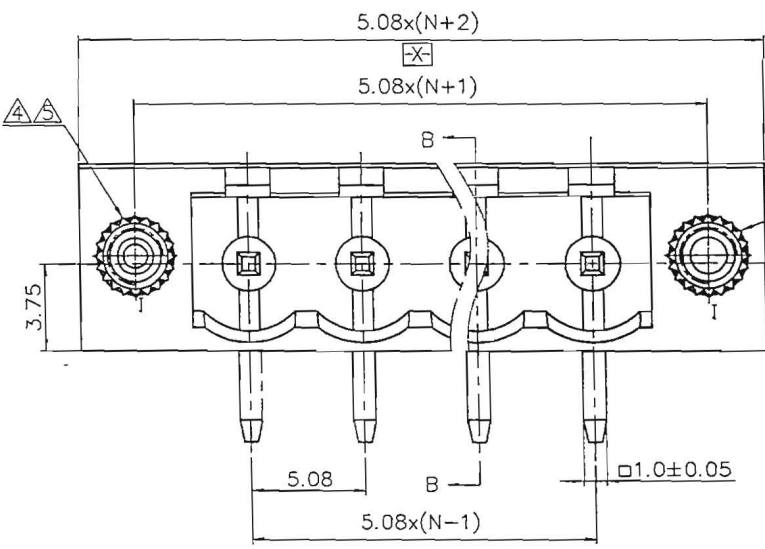
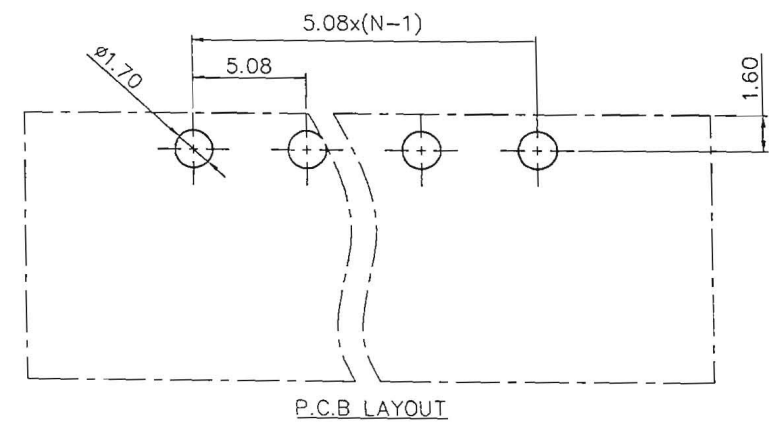


REVISION RECORD				
REV	ECN	DESCRIPTION	DRFT	DATE
△		Drawing emend	CSX	04/04/06
△		更新图面	LJH	04/16/08
△	10-0329	增加标注尺寸	COCO	10/07/10
△	11-0035	改善螺帽结构, 改用变更后零件与螺帽	HD	03/08/11
△	11-0255	修改螺帽孔结构	ZMT	10/17/11
△	14-0107	黄铜变紫铜, 料号变更; 工频耐压变更为额定冲击电压	WL	10/29/14



- NOTES:
1. DIMENSION SHALL BE INTERPRETED PER ASME Y14.5-2009.
 2. PITCH: 5.08MM, POLES: 2-22P
 3. RATED VOLTAGE/CURRENT: UL 300V/15A VDE 320V/20A
 4. OPERATION TEMPERATURES: -40°C ~ +105°C
 5. RATED IMPULSE VOLTAGE: 4.0KV
 6. INSULATION RESISTANCE: 5000MΩ/DC1000V
 7. UNDIMENSIONED TOLERANCES:

	Pitch range in mm		Nominal dimension range in mm				—
	over 6 to 10	over 10 to 24	over 30 to 60	over 60 to 100	over 100 to 150	over 150	
±0.10	±0.15	±0.25	±0.2	±0.3	±0.5	±0.7	±1.0



ITEM	NAME OF PART	NO. OF PART	QTY	MATERIAL	NOTES
3	2EDGR(A)-PIN HEADER(1*8.25*8.7)	1008B00330(H)	XX	COPPER	SN PLATED
2	2EDGK SCREW CAP	S000001040(H)	2	BRASS	
1	2EDGRM-5.08-HOUSING	1012A0YXXC(H)	1	PA66	UL94V-0

DETACHED LISTS	TOLERANCES EXCEPT AS NOTED		FINISH:		MATERIAL:		宁波高松电子有限公司 NINGBO DEGSON ELECTRICAL CO., LTD	
	.X ±	.X' ±	PART NO.:		NAME:		Series 2EDGRM-5.08 2EDGRM-5.08-XXP-1Y-00A(H)	
	.XX ±	.XX' ±	APPD:		TITLE:		ASSEMBLY DRAWING	
	.XXX ±	.XXX' ±	ANGLES ± 1° 		CHKD: Aaron 10/31/14 DRFT: WL 10/29/14		DRAWING NO.: 2EDGRM-5.08-E03 DO NOT SCALE DRAWING	
				SCALE	N/A	SHEET	1/1	