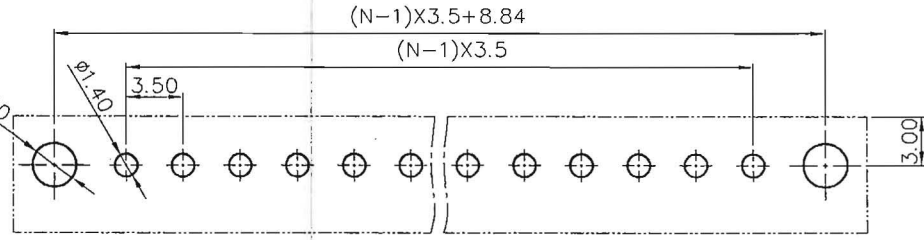
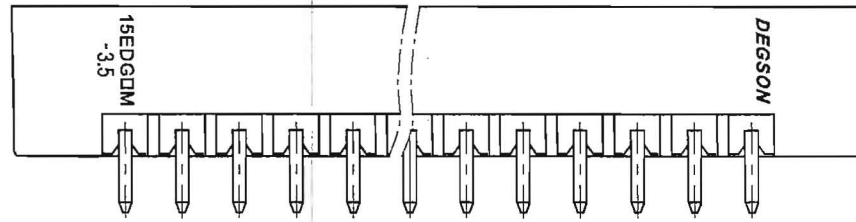
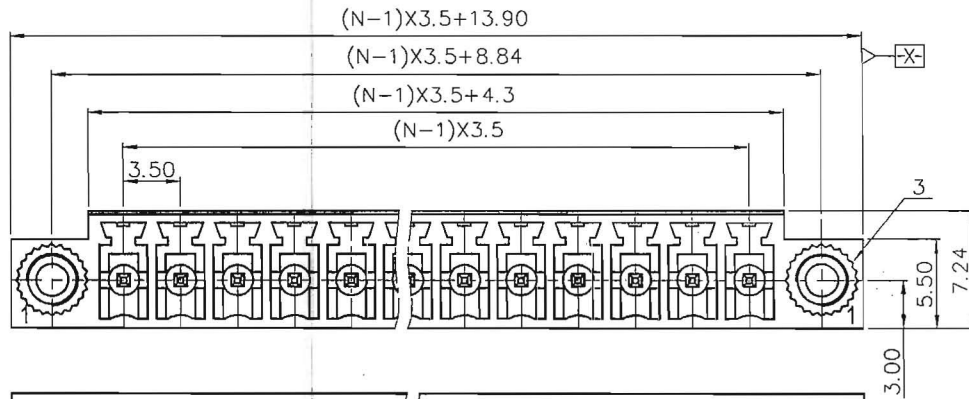
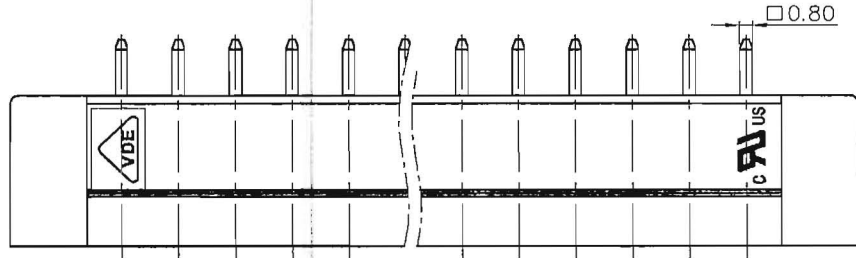
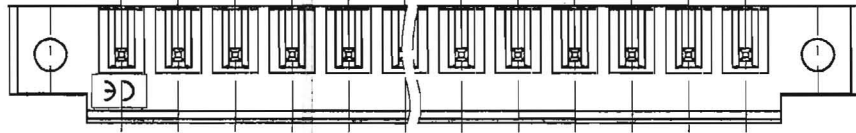


REVISION RECORD				
REV	ECN	DESCRIPTION	DRFT	DATE



PCB LAYOUT

NOTES1:

- UL Standard
- 1. Rated Voltage/Current : 300V / 8A
- 2. Withstanding Voltage : AC1600V/1Min.
- VDE Standard

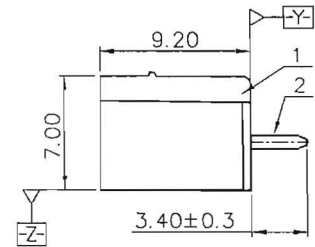
1. Pollution Degree	2
Overvoltage Category	II
Rate Impulse Voltage(KV)	2.5KV
Rate Voltage(V)	250V
Rate Current(A)	7A

NOTES2:

- 1. Dimension shall be interpreted per ASME Y14.5-2009
- 2. Pitch : 3.50mm, Poles : N=2~22P
- 3. Operating temperature: -40°C~+105°C
- 4. Undimensioned Tolerances:

Pitch Range in mm		Nominal Dimension Range in mm				-	∧	∇
TO	Over	TO	Over	TO	Over	0.1/10		
6	10	30	60	100	150			
±0.15	±0.20	±0.30	±0.50	±0.70	±1.00	±1.30	±2'	

5. RoHS Compliance



3	SCREW CAP	BRASS	
2	PIN	BRASS	Sn Plated
1	HOUSING	PA66	UL94V-0
ITEM	NAME OF PART	MATERIAL	NOTES

PART NO.: Series 15EDGVM-3.5

APPD: *Aaxun/olga*

CHKD: *Xm/qd/15*

DRFT: Yz 10/13/15"

DETAILED LISTS

THIRD ANGLE PROJECTION

NINGBO DEGSON ELECTRICAL CO., LTD

NAME: 15EDGVM-3.5-XXP-1Y-00A(H)

TITLE: CUSTOMER DRAWING

DRAWING NO.: 15EDGVM-3.5-C01

REV TO SHEET 1/1

DO NOT SCALE DRAWING SCALE 1:1