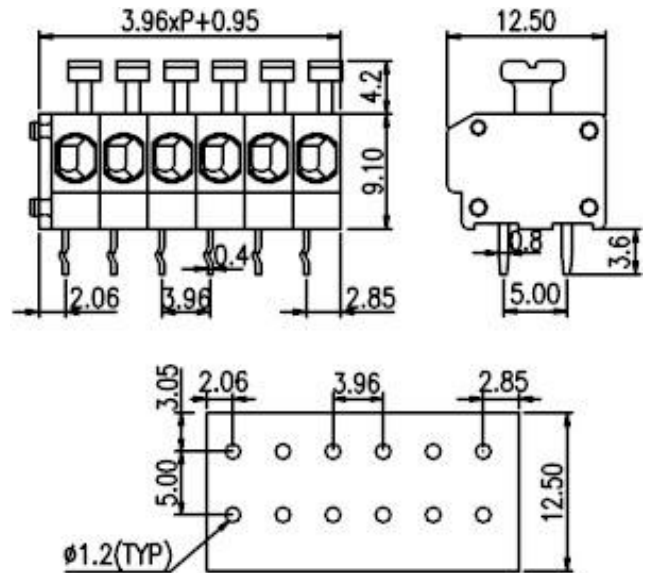
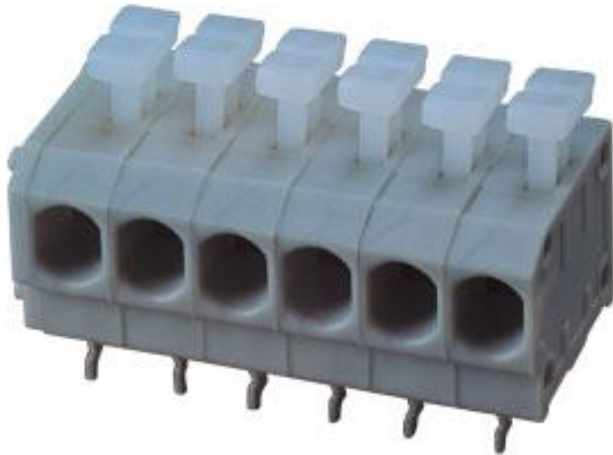




Mini type, simple type cage clamp terminal blocks / 144 series



144RA-..P2



Pitch: 3.96mm

| Approval  |   |       |
|---|--|-------|
| Technical Data  | UL   | IEC   |
| Rated voltage   | 300V   | 250V  |
| Rated current   | 10A  | 17.5A |
| Conductor cross-section, solid (AWG/ mm <sup>2</sup> )    | 20~14 / 0.5~1.5  |       |
| Conductor cross-section, flexible (AWG/ mm <sup>2</sup> ) | 20~14 / 0.5~1.5  |       |
| Rated surge voltage (UL/IEC/Max.)                         | 1.6 / 2 / 3.5 KV   |       |
| Torque (N-m)  |  |       |
| Wire strip length   | 6~7mm  |       |
| End Cover   | 144E   |       |
| Pole  | Cat. No.   |       |
| 02  | 144RA-02P2   |       |
| :   | :  |       |
| :   | :  |       |
| 24  | 144RA-24P2   |       |

TEL: +886-2-2908-0614

FAX: +886-2-2908-8549

E-mail: info@dinkle.com.tw