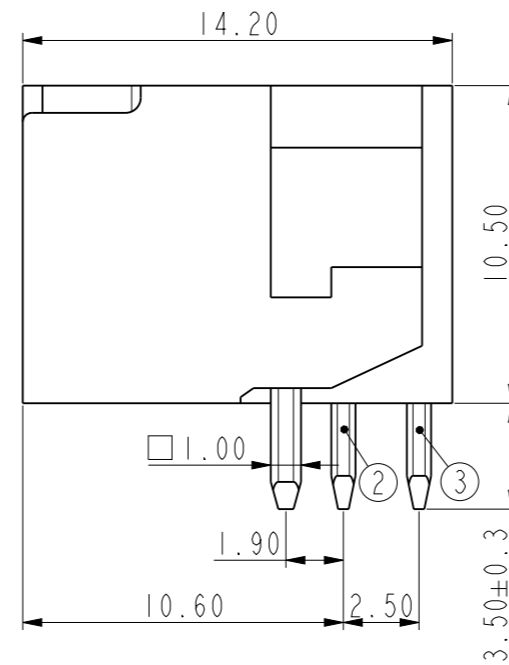
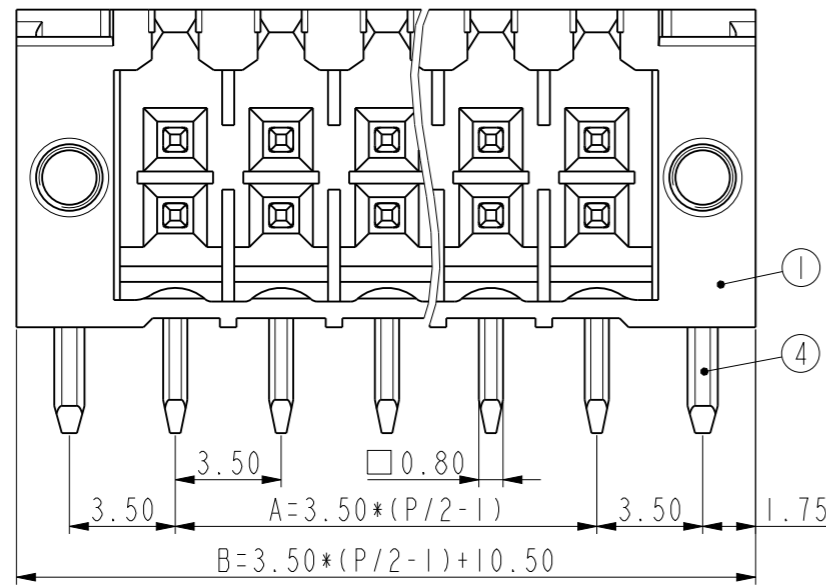
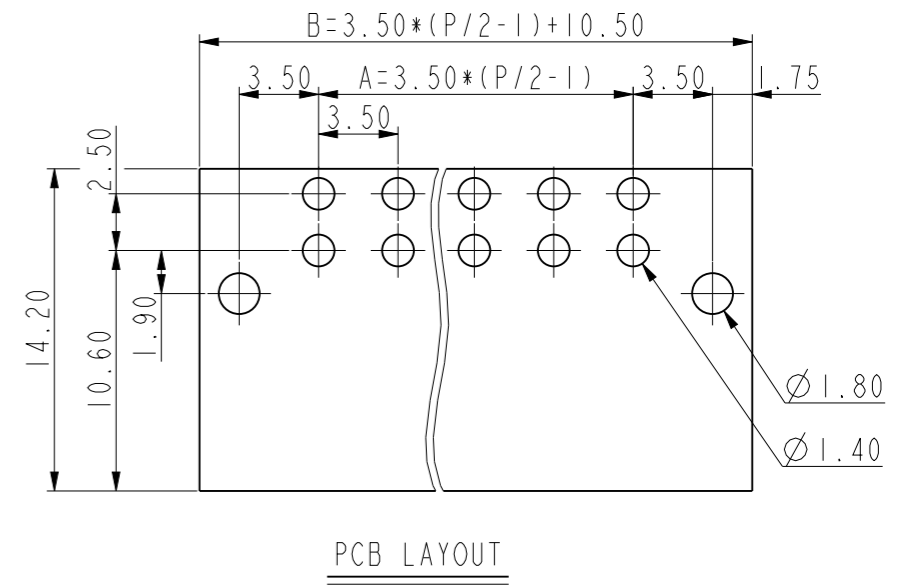
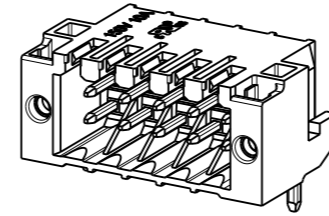
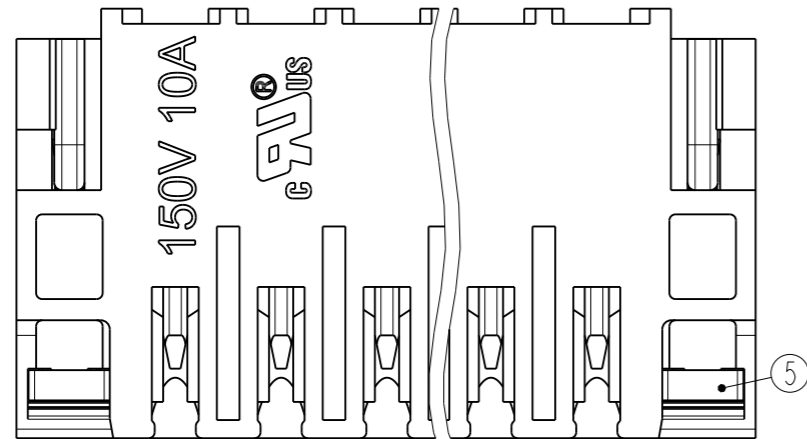


DINKLE has proprietary right to these drawings and specifications hereon, it shall not be reproduced or used as the basis for the manufacture of devices without permission. User should verify drawings are the most recent version.
Copyright © DINKLE Enterprise Co., Ltd. All Rights reserved.



PART NO.:

0156-26XX-□

POLES
04: 4 POLES
06: 6 POLES
...
40: 40POLES

COLOR
BLANK: GREEN (STANDARD COLOR)
BK: BLACK
BL: BLUE
RD: RED
GY: GREY
OR: ORANGE

5	NUT	STEEL	M2/Zn Plated
4	SOLDER PIN 3	COPPER ALLOY	Tin Plated
3	SOLDER PIN 2	COPPER ALLOY	Tin Plated
2	SOLDER PIN 1	COPPER ALLOY	Tin Plated
1	HOUSING	PA66	UL94-V0
ITEM	NAME OF PART	MATERIAL	NOTES

P	4	6	8	10	12	14	16	18	20	22
A	3.50	7.00	10.50	14.00	17.50	21.00	24.50	28.00	31.50	35.00
B	14.00	17.50	21.00	24.50	28.00	31.50	35.00	38.50	42.00	45.50
P	24	26	28	30	32	34	36	38	40	
A	38.50	42.00	45.50	49.00	52.50	56.00	59.50	63.00	66.50	
B	49.00	52.50	56.00	59.50	63.00	66.50	70.00	73.50	77.00	

Total Pitch Tolerances		Normal dimension Tolerances	
0~30	±0.20	0~30	±0.25
over 30~53	±0.25	over 30~53	±0.30
over 53~70	±0.30	over 53~70	±0.35
over 70~90	±0.35	over 70~90	±0.44
over 90~115	±0.44	over 90~115	±0.55
over 115~150	±0.55	over 115~150	±0.70
over 150~200	±0.70	over 150~200	±0.85
over 200~250	±0.85	over 200~250	±1.00
over 250~320	±1.00	over 250~320	±1.20

V3	6				
REV.		CONTENT	DRW.	DATE	

DRW.	Guy.Su	DATE	2023-03-22	GENERAL TOLERANCE	
CHK.	Ying.Xu	DATE	2023-03-22	SPECIFICATION FILE	SF-0156-26-001
APP.	Webb.Liu	DATE	2023-03-22	DRAWING TYPE	SP-03

PART NO. **0156-26XX**

DINKLE ENTERPRISE CO., LTD.

UNITS	mm	THIRD ANGLE PROJECTION	
SCALE	4:1	SHEET/OF	1/1

0156-26

 规格书编号/Specification File No.:**SF-0156-26-001**

版本/Version:A2

一般資訊 / General Information

产品长叙述/Long description	PCB Connector,Pitch :3.50mm , 150V , 10A
产品类型/Product type	PCB Connector – Socket
间距/ Pitch (mm)	3.50
产品颜色/ Color	Refer to drawing
固定方式/ Type of locking	With threaded flange
焊接方式/Soldering Method	Wave Soldering
产品长度/ Length (mm)	$3.50*(P/2-1)+10.5$
产品宽度/ Width (mm)	14.2
产品高度/ Height (mm)	10.5
出脚尺寸(厚度___x 宽度___mm)/ Pin dimensions(mm)	0.8x0.8
出脚长度/Pin length(mm)	3.5
焊孔直径 / PCB hole diameter(mm)	1.4
电位数/Circuit diagram	4~40
产品点数 / Number of poles	04P~40P
产品层数/Level	2
连接点数/Connection points	4~40

材料信息/ Material Information

绝缘材料/ Insulating material	PA66
绝缘材料组别 / Insulating material group	I
阻燃等级,符合 UL94 / UL94 Flammability rating	V0
绝缘阻抗/ Insulation resistance	$\geq 500M\Omega$ at DC 500V
导体材料/ Conductor material	COPPER ALLOY
导体表面镀层/Plating of conductor surface	Tin PLATED

IEC数据 / IEC Data

额定电压 / Rated Voltage (V)	320
额定电流 / Rated Current (A)	10
额定电压 (II/2) / Rated Voltage (II/2) (V)	320
额定电压 (III/2) / Rated Voltage (III/2) (V)	160
额定电压 (III/3) / Rated Voltage (III/3) (V)	160

0156-26

 规格书编号/Specification File No.: **SF-0156-26-001**

 版本/Version: **A2**

额定冲击电压(II/2) / Rated Impulse Voltage (II/2)(kV)	2.5
额定冲击电压(III/2) / Rated Impulse Voltage (III/2)(kV)	2.5
额定冲击电压(III/3) / Rated Impulse Voltage (III/3)(kV)	2.5

UL数据 / UL Data

额定电压(UL/CUL 标准 B 组)/Rated Voltage (UL/CUL Group B) (V)	150
额定电流(UL/CUL 标准 B 组)/Rated Current (UL/CUL Group B) (A)	10

通用参数 / General Data

法兰最大扭矩/Tightening flange torque max(N.m)	0.2
--	-----

环境与安全 / Environmental and safety

手指接触防护 IP20(IEC 60529) / Finger protection IP20(IEC60529)	YES
最高工作温度/Operating temperature max (°C)	120
最低工作温度/Operating temperature min (°C)	-40

产品认证/许可 / Approvals



UL Recognized

额定电压 B 组/Rated Voltage (Group B) (V)	150
额定电流 B 组/Rated Current (Group B) (A)	10

CUL Recognized

额定电压 B 组/Rated Voltage (Group B) (V)	150
额定电流 B 组/Rated Current (Group B) (A)	10