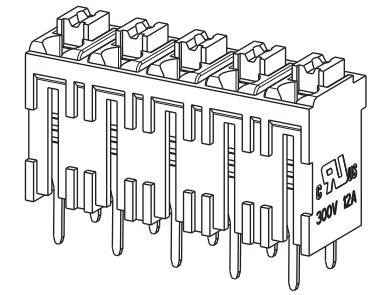
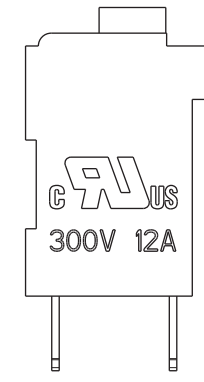
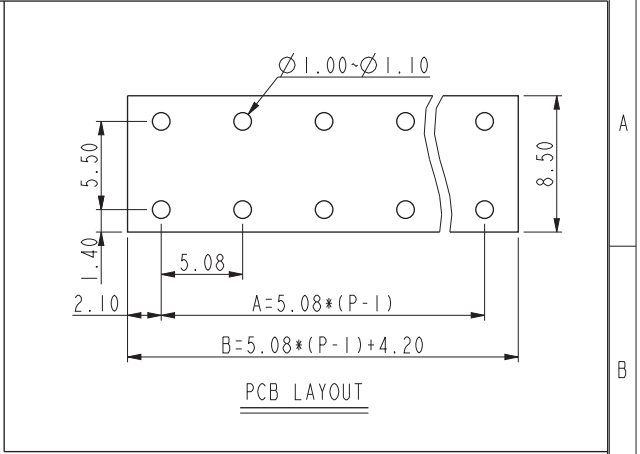
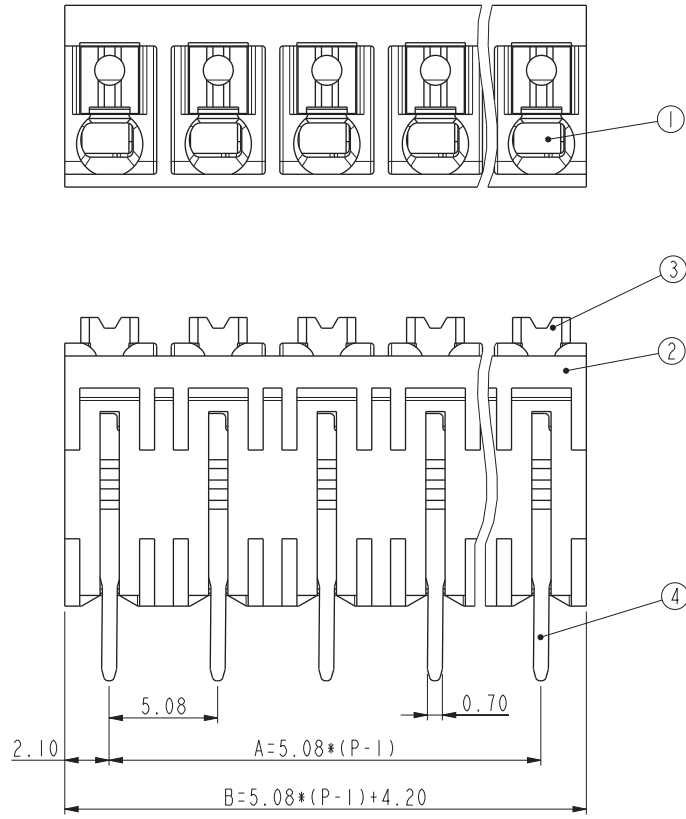
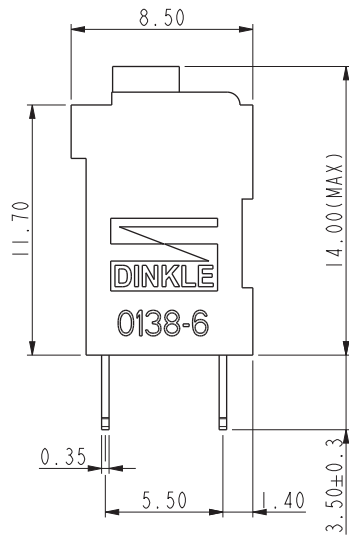


DINKLE has proprietary right to these drawings and specifications hereon, it shall not be reproduced or used as the basis for the manufacture of devices without permission. User should verify drawings are the most recent version.
Copyright © DINKLE Enterprise Co., Ltd.



P	2	3	4	5	6	7	8	9
A	5.08	10.16	15.24	20.32	25.4	30.48	35.56	40.64
B	9.28	14.36	19.44	24.52	29.6	34.68	39.76	44.84
P	10	11	12	13	14	15	16	17
A	45.72	50.8	55.88	60.96	66.04	71.12	76.2	81.28
B	49.92	55	60.08	65.16	70.24	75.32	80.4	85.48
P	18	19	20	21	22	23	24	
A	86.36	91.44	96.52	101.6	106.68	111.76	116.84	
B	90.56	95.64	100.72	105.8	110.88	115.96	121.04	

Total Pitch Tolerances		Normal dimension Tolerances	
0-30	±0.20	0-30	±0.25
over 30-53	±0.25	over 30-53	±0.30
over 53-70	±0.30	over 53-70	±0.35
over 70-90	±0.35	over 70-90	±0.44
over 90-115	±0.44	over 90-115	±0.55
over 115-150	±0.55	over 115-150	±0.70
over 150-200	±0.70	over 150-200	±0.85
over 200-250	±0.85	over 200-250	±1.00
over 250-320	±1.00	over 250-320	±1.20

VI	I				
REV.		CONTENT	DRW.	DATE	

4	SOLDER PIN	COPPER ALLOY	Tin Plated
3	LEVER	High-temperature plastics	UL94-V0 WHITE
2	HOUSING	High-temperature plastics	UL94-V0 BLACK
1	CLAMP	STAINLESS STEEL	
ITEM	NAME OF PART	MATERIAL	NOTES

DRW.	Carl.Cui	DATE	2019-01-05	GENERAL TOLERANCE	
CHK.	Siber.Ma	DATE	2019-01-07	SPECIFICATION FILE	SF-0138-60-002
APP.	Clark.Deng	DATE	2019-01-07	DRAWING TYPE	SP-03

NAME: **0138-60XXL**

DINKLE ENTERPRISE CO., LTD.	UNITS	mm	THIRD ANGLE PROJECTION	
	SCALE	4:1	SHEET/OF	1/1

0138-60

规格书编号/Specification File No.: SF-0138-60-002

版本/Version: A1

一般資訊 / General Information

产品长叙述/Long description	PCB Terminal Blocks , Push-in Design, Pitch :5.08mm , 300V , 12A
产品类型/Category	PCB Terminal Blocks
间距/ Pitch (mm)	5.08
产品颜色/ Color	Refer to drawing
接线方式/Connection method	Push-in Design
固定方式/ Type of locking	Without
焊接方式/Soldering Method	Reflow Soldering
产品长度/ Length (mm)	5.08* (P-1) +4.2
产品宽度/ Width (mm)	8.5
产品高度/ Height (mm)	14
引脚尺寸(厚度__x 宽度__mm)/ Pin dimensions(mm)	0.35x0.7
焊孔直径/PCB hole diameter(mm)	1.0~1.1
产品点数/Number of poles	02P~24P

材料信息/ Material Information

绝缘材料/ Insulating material	HIGH-TEMPERATURE PLASTICS
绝缘材料组别 / Insulating material group	IIIa
阻燃等级,符合 UL94 / UL94 Flammability rating	V0
绝缘阻抗/ Insulation resistance	> 500MΩ at DC 500V
导体材料/Contact material	Copper Alloy
导体表面镀层/Contact surface	Tinned
湿度敏感等级/humidity sensitive grade	1

IEC数据 / IEC Data

额定电压 / Rated Voltage (V)	320
额定电流 / Rated Current (A)	17.5
额定电压 (II/2) / Rated Voltage (II/2) (V)	500
额定电压 (III/2) / Rated Voltage (III/2) (V)	320
额定电压 (III/3) / Rated Voltage (III/3) (V)	250
额定冲击电压(II/2) / Rated Impulse Voltage (II/2) (kV)	4

0138-60

 规格书编号/Specification File No.: **SF-0138-60-002**

版本/Version: A1

额定冲击电压(III/2) / Rated Impulse Voltage (III/2) (kV)	4
额定冲击电压(III/3) / Rated Impulse Voltage (III/3) (kV)	4
最小硬质导线横截面积/ Conductor cross section solid. min (mm ²)	0.14
最大硬质导线横截面积/ Conductor cross section solid. max (mm ²)	1.5
最小柔性导线横截面积/ Conductor cross section stranded. min (mm ²)	0.14
最大柔性导线横截面积/ Conductor cross section stranded. max (mm ²)	1.5
柔性导线横截面积·最小的管状裸端子 / Conductor cross section flexible, with min ferrule without insulation (mm ²)	0.25
柔性导线横截面积·最大的管状裸端子 / Conductor cross section flexible, with max ferrule without insulation (mm ²)	1.5
柔性导线横截面积·最小的管状预绝缘端子 / Conductor cross section flexible, with min ferrule with insulation (mm ²)	0.25
柔性导线横截面积·最大的管状预绝缘端子 / Conductor cross section flexible, with max ferrule with insulation (mm ²)	0.75
螺丝刀规格/Screwdriver size	0.4x2.5 (mm)
剥线长度 / Stripping Length(mm)	8~9

UL数据 / UL Data

额定电压 (UL/CUL 标准组 B 组)/Rated Voltage (UL/CUL B Group) (V)	300
额定电流 (UL/CUL 标准组 B 组)/Rated Current (UL/CUL B Group) (A)	12
额定电压 (UL/CUL 标准组 D 组)/ Rated Voltage (UL/CUL D Group) (V)	300
额定电流 (UL/CUL 标准组 D 组)/Rated Current (UL/CUL D Group) (A)	10
AWG,符合 UL/CUL, min/Min.connection AWG acc. to UL/CUL	28
AWG,符合 UL/CUL, max/Max.connection AWG acc. to UL/CUL	16
AWG,符合 UL/CUL, Sol. min/Min.. solid wire connection AWG acc. to UL/CUL	28
AWG,符合 UL/CUL, Sol. max/Max.. solid wire connection AWG acc. to UL/CUL	16

环境与安全/ Environmental and safety

手指防护(YES or NO) / Finger protection	YES
最高工作温度 / Max. operating temperature(°C)	120
最低工作温度 / Min. operating temperature(°C)	-40

产品认证/许可/ Approvals



0138-60

 规格书编号/Specification File No.: **SF-0138-60-002**

版本/Version: A1

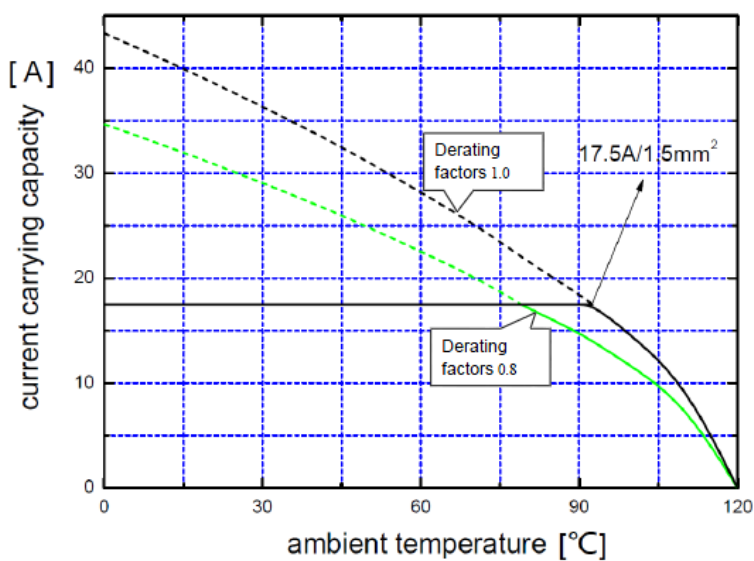
UL Recognized

线径范围 B 组/Wire Range (Group B) (AWG)	28~14
额定电压 B 组/Rated Voltage (Group B) (V)	300
额定电流 B 组/Rated Current (Group B) (A)	12
线径范围 D 组/Wire Range (Group D) (AWG)	28~14
额定电压 D 组/Rated Voltage(Group D) (V)	300
额定电流 D 组/Rated Current(Group D) (A)	10

CUL Recognized

线径范围 B 组/Wire Range (Group B) (AWG)	28~14
额定电压 B 组/Rated Voltage (Group B) (V)	300
额定电流 B 组/Rated Current (Group B) (A)	12
线径范围 D 组/Wire Range (Group D) (AWG)	28~14
额定电压 D 组/Rated Voltage(Group D) (V)	300
额定电流 D 组/Rated Current(Group D) (A)	10

降额曲线图 / Derating Curve



Reduction factor=0.8